

# BERKELEY FUTURES LIMITED

Offering dealing services in Derivatives  
to Institutions and Individuals since 1986

**Futures**  
**Options**  
**CFDs**  
**Bullion**  
**Forex**  
**Equities**

**Individuals**  
**Corporations**  
**Hedge Funds**  
**Trusts**  
**SIPPs**

**Introducing Brokers**  
**Introducing Agents**

Jackson House, 18 Savile Row, London, W1S 3PW

[www.bfl.co.uk](http://www.bfl.co.uk)

+44 (0) 207 758 4777

[trade@bfl.co.uk](mailto:trade@bfl.co.uk)

## Introduction

Berkeley Futures Limited has offered dealing services in derivatives since 1986. Berkeley believes the client broker relationship is paramount and encourages customers to visit its offices located in the West End of London in order to build a relationship face-to-face.

Initially focusing on Futures and Options the firm quickly expanded its product range to include Forex, CFDs and Bullion. In 2000, to further meet the needs of our client base, Berkeley Equities was established which provides Stock Broking and IPO services across international stock markets.

Berkeley Futures Limited is part-owned by Macquarie Investments (UK) Limited, a UK investment subsidiary of Macquarie Group, a global provider of banking, financial, advisory, investment and fund management services.

Berkeley is authorised and regulated by the Financial Services Authority and is a member of the London Stock Exchange and Futures and Options Association.

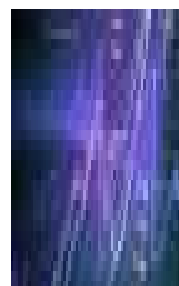
## Futures & Options

- Stock Indices, Base and Precious Metals, Grains, Soft Commodities, Energy Products, Currencies and Financials
- Trade Spreads and Strategies
- DMA for speed, efficiency and best execution
- System and Algorithmic trading offered on-line
- Buy or Write Options (on a covered or uncovered basis)
- Multiple order types accepted including Day, Stop, Limit, MIT, GTC, GTD and If Done as well as Syoms orders such as Bracket Orders and Icebergs



## CFDs

- Telephone dealing across UK, European and US equity CFDs
- Exchange traded prices dealt, offering best execution
- Collateral may be used to support margin requirements



## Bullion



- Gold, Silver, Platinum and Palladium
- Deal spot or forward

## Equities

- UK, US and European and most other major exchanges
- Initial Public Offerings (IPOs)
- Portfolio enhancement and hedging



## Forex

- On-line platform and telephone service with access to multi bank liquidity pool
- Wide range of currency crosses traded including both major and exotic pairs
- Non-deliverable forwards and swaps
- Currency delivery service available at competitive rates for same day or future delivery



## Types of accounts offered

### Advisory Account

You can discuss ideas and strategies with your allocated account executive. Once ideas have been established and bearing in mind your risk parameters, your broker will help you efficiently translate them into market positions using the various products available. Positions will then be monitored on your behalf with regular updates provided.

### Link Account

Here we provide broker-assisted trading, where we will help you to translate your ideas into market positions and manage your orders efficiently.



### Execution Only Account

This account is available to those who have market experience and only require a professional dealing service at discounted rates of commission.

### Managed Account

Various Managed Accounts are offered using both internal and external managers designed to give diversification to customers' investment portfolios.

## Traditional Brokerage Services

Berkeley offers traditional telephone broking in Futures, Options, CFDs, Foreign Exchange, Bullion and Equities.

Our unique client driven philosophy enables you the opportunity to build an enduring relationship, develop strategies with confidence, and execute them through your allocated account executive. With highly competitive commission rates, customers can count on efficient execution through a trading desk staffed by experienced FSA registered brokers.



## On-line Trading Services



Berkeley On-line was established in 2000 to offer Direct Market Access (DMA) to the world's major Futures and Options Exchanges. Berkeley offers a series of dealing platforms to cater for customers' DMA requirements. In addition to the in-house supported PATSystems products, Berkeley provides connectivity to other trading systems including Ninja Trader, Strategy Runner and other third party trading solutions by a proprietary or FIX API.

### IQ-Trader

- Our premier product for Futures and Options
- Three different levels of the platform offered:
  1. Standard level includes a comprehensive charting package including a trade off charts function, order management, and paper trade account.
  2. Advanced level has automated trading as well



- as back testing and optimisation.
- 3. Premier version includes inter-product spreading, strategy scripting tool and strategy simulation.

### ProTrader

- A simple and free to use platform

Contract	Bid	Bid Vol	Offer	Offer Vol	Last	Last Vol
US1M FTSE100 1 MAR08	5769.5	2	5770.5	1	5770.0	4
XEuro1 DAX 1 MAR08	6658.5	3	6660.0	5	6659.5	5
CME 1 MN N SP 1 MAR08	1324.00	81	1324.25	18	1324.00	1
CME 1 MN NSDQ 1 MAR08	1739.50	4	1739.00	4	1739.00	4
CME CBOT 1 MWDO 1 MAR08	12295	10	12295	3	12295	4
XEuro1 1 BLND 1 MAR08	117.30	609	117.31	918	117.30	307
XEuro1 1 BOBL 1 MAR08	111.380	135	111.385	508	111.385	20
XEuro1 1 SCHATZ 1 MAR08	104.825	645	104.830	1085	104.825	950
KCBOT 1 TBOND 1 MAR08						
KCBOT 1 10 YR NOTE 1 MAR08						
CME 1 Br Pound 1 MAR08	1.9895	5	1.9900	19	1.9907	4
CME 1 Euro FX 1 MAR08	1.5161	36	1.5163	50	1.5162	1
CME 1 Yen 1 MAR08	0.009721	1	0.009722	20	0.009721	9

- J-Trader - the ideal beginners platform
- Streaming level two prices, Single click trading, Real time P&L, Trailing stops, Bracket orders and more

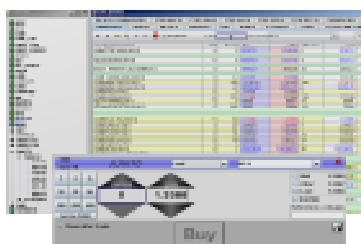
### Currenex

- Margined Foreign Exchange Platform for trading with tight spreads through a deep liquidity pool.
- The ability to trade directly off charts
- Split second execution time, Executable streaming prices, Bracket orders and much more.
- A comprehensive charting package
- API Connectivity available



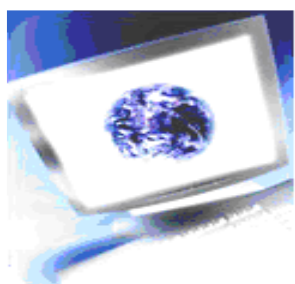
### Pro-Mark

- A powerful and technical trading platform aimed at the high frequency trader
- Excel integration
- Prism to create multi strategies and ratios across any number of legs



## Additional Services

- Each customer may view their account by accessing our secure on-line back office system via a Client Facing Portal (CFP) showing Trades, Positions, Account Value, Free Equity, Option Deltas, Margins and Daily and Monthly Statements



- Free prices, charts and technical information including order placement guides, expiry dates, latest schedule for government and economic reports and data, exchange listings and product specifications are accessible from our website [www.bfl.co.uk](http://www.bfl.co.uk)
- Each customer is allocated their own experienced account executive to look after dealing and other general enquiries.
- The option to receive a free Daily Commodities Report and Weekly Market Report
- Access to Physical Foreign Exchange facilities
- Bespoke services for Hedge Funds, Introducing Agents and Introducing Brokers

## How to Open an Account

Having decided to open an account with Berkeley please contact an account executive on +44 (0) 207 758 4777 or [trade@bfl.co.uk](mailto:trade@bfl.co.uk). Once we ascertain your status as an individual, corporate, trust or SIPP we will then be able to provide you with the correct documents and assist you with the account opening process. Individuals may download the paper work directly on-line at [www.bfl.co.uk](http://www.bfl.co.uk), by clicking on 'Open an Account'

You are welcome to visit our offices at 18 Savile Row, London, W1S 3PW where the process can be completed with your account executive.



## ID Requirements

- If you are a UK citizen and resident all we need from you is either a copy of your photo card driving licence or passport plus a proof of address (either utility bill or bank statement dated within the last three months). Berkeley will then confirm your ID electronically (further information may be required if we are unable to identify you electronically)
- Overseas customers should provide an authenticated copy of a valid passport and proof of address (either a bank statement or utility bill) together with a third party verification of their ID such as a letter from a bank, employer, legal representative or consulate.

## Bank Details

All funds are held within client segregated accounts

An account can be funded by bank to bank transfer, debit card or cheque.

Please find below our banking details:

Account name:	Berkeley Futures Limited Client Account
Sort Code (GBP):	50-41-01
IBAN BIC:	NWBK GB 2L

	<u>Account Number</u>	<u>IBAN</u>
Sterling (GBP):	13024892	GB17NWBK50410113024892
Euro (EUR):	550-00-06643698	GB35NWBK60721106643698
US Dollar (USD):	140-00-02041790	GB63NWBK60730102041790
Swiss Franc (CHF):	234-00-04301528	GB40NWBK60730104301528
Australian Dollar (AUD):	160-00-48000094	GB04NWBK60730148000094
UAE Dirham (AED):	428-00-48019038	GB94NWBK60730148019038

Other currency accounts available on request

Please make cheques payable to "Berkeley Futures Limited Client Account"

Please note that dealing in equities, futures, options, foreign exchange, bullion and CFDs are all areas of investment in which it is possible to lose money. The risks attached to dealing in off-exchange products such as foreign exchange and CFDs differ from those attached to trading in on-exchange products. If you trade in any geared/contingent liability product it is possible to lose in excess of the funds you may have put in as your initial deposit. Investing in any of the products mentioned may not be suitable for you and if you are in any doubt you should consult your financial adviser. Berkeley On-line and Berkeley Equities are trading names of Berkeley Futures Limited.